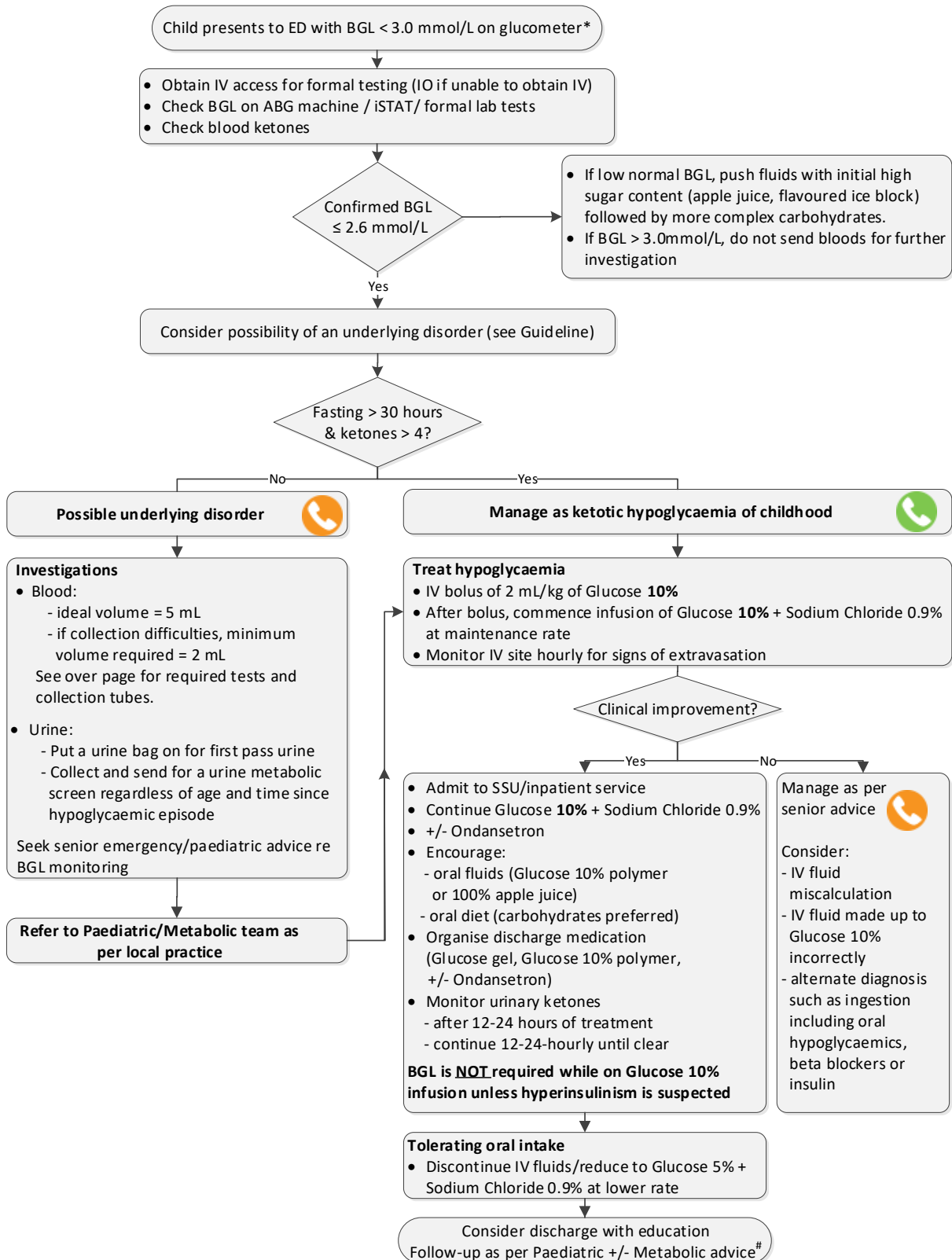


Queensland Paediatric Flowchart

Metabolic

Unexplained hypoglycaemia – Management in children – Flowchart







*Excluding children with a diagnosis known to present with hypoglycaemia (manage as per their emergency sick day plan).

Make an outpatient referral to the Metabolic team, Queensland Children's Hospital if an overnight fast precipitated hypoglycaemic event.

Consider seeking senior emergency/paediatric advice as per local practice

Seek senior emergency/paediatric advice as per local practice. Consider seeking paediatric metabolic advice.

Blood collection for initial investigations of unexplained hypoglycaemia

Preferred blood collection (minimum volume 5.0mL)				
Tube type	Tube description		Volume required	Tests required
Serum	Red or yellow pedi-pot		3 mL	<ul style="list-style-type: none"> free fatty acids βhydroxybutyrate cortisol growth hormone insulin E/LFTs
Lithium heparin no gel	Green pedi-pot or adult pot		0.5 mL	<ul style="list-style-type: none"> acylcarnitine plasma amino acids
Fluoro-oxalate	Grey pedi-pot		1 mL	<ul style="list-style-type: none"> glucose lactate Can be performed on VBG
EDTA	Purple pedi-pot		0.5 mL	<ul style="list-style-type: none"> ammonium Notify and send to lab urgently. Check with lab if needs to be on ice

Recommended blood collection for child with collection difficulties

Essential blood collection (minimum volume 2 mL)				
Tube type	Tube description	Volume	Tests required	
Lithium heparin- no gel	Green pedi-pot or adult pot	0.5 mL	<ul style="list-style-type: none"> acylcarnitine plasma amino acids - may be done from a newborn screening card if collection is difficult. 	
Fluoro-oxalate	Grey pedi-pot	1 mL	<ul style="list-style-type: none"> glucose lactate Can be performed on VBG	
Serum	Red or yellow pedi-pot	0.5 mL	<ul style="list-style-type: none"> cortisol insulin 	
Second priority investigations (2 mL volume)				
Tube type	Tube description	Volume	Tests required	
Serum	Red or yellow pedi-pot	0.5 mL	<ul style="list-style-type: none"> growth hormone 	
EDTA	Purple pedi-pot	0.5 mL	<ul style="list-style-type: none"> ammonium Notify and send to lab urgently (check if needs to be on ice)	
Serum	Red or yellow pedi-pot	1.0 mL	<ul style="list-style-type: none"> E/LFTs 	

For more information refer to [CHQ-GDL-60024 - Hypoglycaemia – Management in children](#)

