

# Environmental Sustainability Plan

2021-2024



SUSTAINABILITY MATTERS



Queensland  
Government

Children’s Health Queensland Hospital and Health Service *Environmental Sustainability Plan 2021-2024*  
(Document ID: CHQ-PLAN-30577). Published by the State of Queensland (Queensland Health), September 2021.

An electronic version of this document is available at [www.childrens.health.qld.gov.au/chq/about-us/strategies-plans](http://www.childrens.health.qld.gov.au/chq/about-us/strategies-plans)



This document is licensed under a Creative Commons Attribution 3.0 Australia licence.  
To view a copy of this licence, visit [creativecommons.org/licenses/by/3.0/au](http://creativecommons.org/licenses/by/3.0/au) © State of Queensland (Queensland Health) 2021

You are free to copy, communicate and adapt the work, if you attribute the State of Queensland (Queensland Health).

For more information contact: Children’s Health Queensland [CHQ\\_Sustainability@health.qld.gov.au](mailto:CHQ_Sustainability@health.qld.gov.au)

*Disclaimer: The content presented in this publication is distributed by the Queensland Government as an information source only. The State of Queensland makes no statements, representations or warranties about the accuracy, completeness or reliability of any information contained in this publication. The State of Queensland disclaims all responsibility and all liability (including without limitation for liability in negligence) for all expenses, losses, damages and costs you might incur as a result of the information being inaccurate or incomplete in any way, and for any reason reliance was placed on such information.*

#### Photos and artworks

Cover: Rawpixel/Shutterstock.com

Page 2: PeopleImages/iStock.com

Page 3: davidf/iStock.com

Page 9: *My Tranquil Place – Daintree Rainforest*, by Quinn, year 4 Queensland Children’s Hospital School.

Page 10: A collaboration artwork by Queensland Children’s Hospital School students from Prep to year 4.

Page 12: Ray Cash

Page 13: Makeral/CanStockPhoto.com

Page 14: MintImages/CanStockPhoto.com

Page 15: robcruse/iStock.com

Page 16: Ray Cash

## Contents

Message from the Health Service Chief Executive .....	2
Aboriginal and Torres Strait Islander connection to country.....	3
Introduction .....	4
Our journey to sustainability.....	5
Sustainability in action at Children’s Health Queensland .....	6
Reimagining the future through environmental sustainability .....	9
Our environmental sustainability areas of focus .....	10
<b>Focus 1: Leadership and innovation.....</b>	<b>11</b>
<b>Focus 2: Procurement.....</b>	<b>12</b>
<b>Focus 3: Transportation.....</b>	<b>13</b>
<b>Focus 4: Energy and Water.....</b>	<b>14</b>
<b>Focus 5: Waste.....</b>	<b>15</b>
<b>Focus 6: Resilience .....</b>	<b>16</b>
Governance, review and monitoring .....	17



# Message from the Health Service Chief Executive

The health of our planet is inextricably tied to the health of humanity. In the face of complex and increasing environmental challenges, healthcare providers must play a central role in making the positive changes needed to achieve healthier outcomes for the world we live in. At Children's Health Queensland, we believe we have an obligation to do everything within our power to make positive and lasting change today to ensure a healthier tomorrow for children and young people.

Environmental sustainability is a natural extension of Children's Health Queensland value of care – in order to 'look after each other' in a meaningful and holistic way that delivers the best health outcomes now and into the future, we need to provide healthcare in a way that minimises environmental harm and builds an appreciation for the role our environment plays in healing, health and overall wellbeing.

As a statewide leader in paediatric healthcare, research, education and advocacy, Children's Health Queensland has a crucial role in stewarding environmental change in collaboration with our partners. The Children's Health Queensland *Environmental Sustainability Plan 2021-2024* maps our ambitious road ahead and collective call to action.

The passion and resolve of our staff, partners, families and communities to become a more socially and environmentally responsible organisation is clear. The *Environmental Sustainability Plan 2021-2024* solidifies our commitment to improve our organisational carbon footprint and proactively embed environmental sustainability into how we do business each and every day.

This document highlights the opportunities for improved environmental performance across our organisation, sets targets for improved sustainability and demonstrates a commitment to pursue new and innovative ways to minimise our impact on the environment.

I want to acknowledge the leadership of our clinical workforce and Clinical Council in advocating for, and championing, our focus on environmental sustainability.

A collective approach is imperative to realising our Environmental Sustainability agenda. I invite all staff, families and the broader community to join us on this important journey to building a culture of environmental responsibility and innovation at Children's Health Queensland that will deliver meaningful benefits now and for generations to come.

**Frank Tracey**, Chief Executive

# Aboriginal and Torres Strait Islander connection to country

**Children's Health Queensland pays respect to the Traditional Owners of the lands on which we walk, talk, work and live. We acknowledge and pay our respects to Aboriginal and Torres Strait Islander Elders past, present and emerging.**

Aboriginal and Torres Strait Islander people have a deep connection to country. Country is more than a physical place, it is a spiritual connection to culture, language, family, law and identity intrinsically linked to ancestral lands. For Aboriginal and Torres Strait Islander people, land is the Mother that protects and provides for the people and therefore the people are responsible as custodians for caring for their country. The connection between country and its people is interdependent and inextricable. When they are removed from each other, or where one is damaged the wellbeing of both suffers. The health of the land, waters and wildlife is central to the wellness and survival of Aboriginal and Torres Strait Islander peoples.

For tens of thousands of years, Aboriginal and Torres Strait Islander people have been entrusted with the sacred spirituality, cultural knowledge and responsibility of their country and were gifted with the opportunity to live intertwined and in balance with their surroundings.

Children's Health Queensland acknowledges Aboriginal and Torres Strait Islander people's connection to country. A founding principle of our sustainability program is to provide an action plan that respects Traditional Custodians' connection to land and their balance with the environment.



# Introduction

Environmental sustainability is critical to delivering Children's Health Queensland's vision of leading life-changing care for children and young people – for a healthier tomorrow.

The *Children's Health Queensland Strategic Plan 2020-2024* highlights our commitment to be an environmentally responsible organisation. The *Children's Health Queensland Environmental Sustainability Plan 2021-2024* (the Plan) articulates how this commitment translates into action.

Children's Health Queensland has set the ambitious goal of becoming a leader in responsible practices that create economic, environmental and social benefits for a healthier and more sustainable future.

We continue to strengthen our resolve to reduce our environmental footprint through best practice and continuous improvement. Central to this is a person-centred approach that creates value not only for the environment, but also for children, young people, families, the community, staff and our partners.



# Our journey to sustainability

Our journey to sustainability began before the Queensland Children's Hospital opened in November 2014. Several consumption reduction initiatives were included in the building scope of works and several environmental sustainability initiatives were also established as 'business as usual' during commissioning.

Early initiatives included:

- A façade that optimises light and reduces heat and glare.
- Light motion and water tap motion sensors
- Water tanks.
- General waste compactor and paper and cardboard compactor onsite.
- Dedicated bicycle facilities for staff and visitors.
- Digital hospital strategy to move to a paper-light organisation.

In 2017 Children's Health Queensland joined the Global Green and Healthy Hospitals network (GGHH). This network provides a comprehensive sustainability framework and support network for hospitals and health systems around the world working towards greater sustainability and contributing to improved public and environmental health. As an active network member of the GGHH Network, the Plan reflects our ongoing commitment to addressing these shared goals.

In the same year Children's Health Queensland also launched the Sustainability Matters program, which laid the foundation for our environmental sustainability agenda by reviewing and benchmarking performance, starting the conversation about sustainability, and recruiting workplace 'champions' to promote more environmentally aware practice among colleagues.

Children's Health Queensland's Environmental Stewardship Network has been involved in developing the prioritised suite of strategies and actions that are outlined in the Children's Health Queensland *Environmental Sustainability Plan 2021-2024*. The Plan will continue to build upon the momentum already generated as we move into the next phase of our environmental sustainability journey.



# Sustainability in action at Children's Health Queensland

## Celebrating a snapshot of our environmental sustainability initiatives



11 tonnes  
food waste  
composted



# Sustainability in action at Children's Health Queensland

Celebrating a snapshot of our environmental sustainability initiatives





# Sustainability in action at Children's Health Queensland

Celebrating a snapshot of our environmental sustainability initiatives



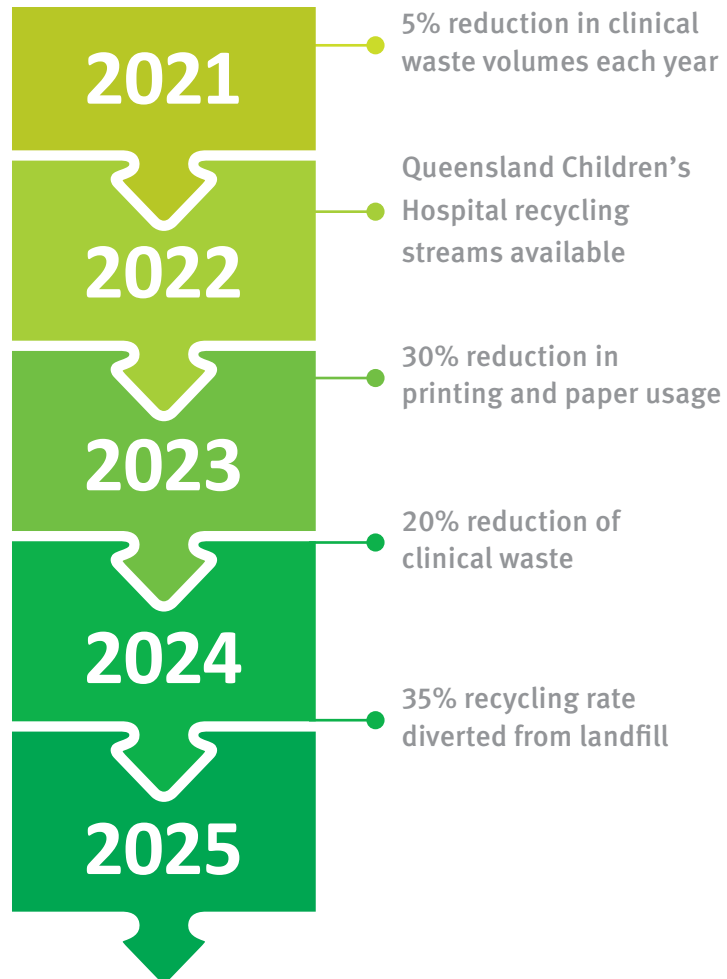
150m<sup>2</sup>  
international aid  
donations

357,000kg  
recycled in  
2020

2 tonnes  
metal recycled  
each month

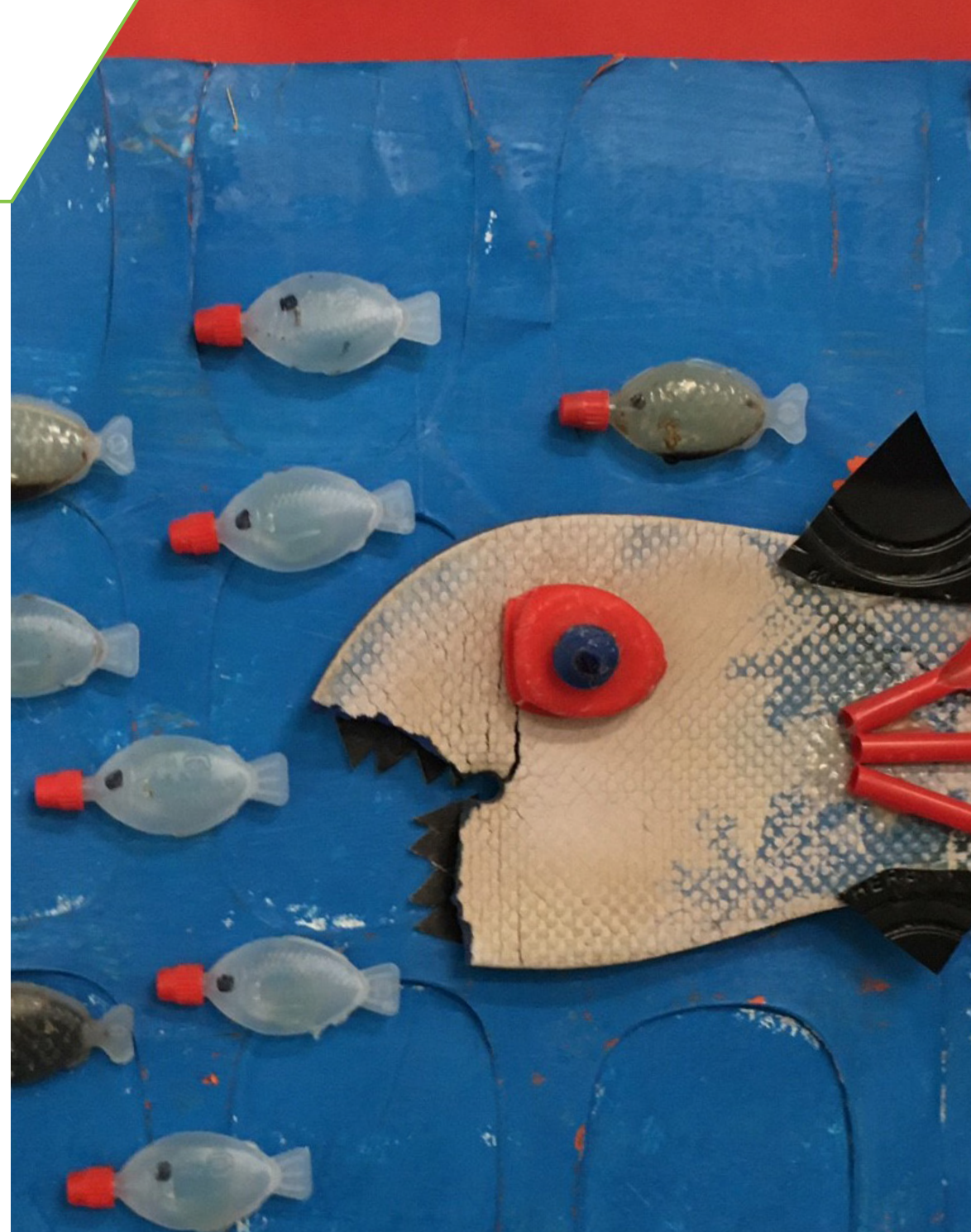
# Reimagining the future through environmental sustainability

## Our environmental sustainability targets across the next four years



# Our environmental sustainability areas of focus

At the heart of this Plan are six areas of focus which articulate our overarching goals, associated commitments and supporting strategies as summarised below.





## Focus 01: Leadership and innovation

### Our commitment:

We will champion a culture of innovation and improvement by enabling, educating and empowering staff, young people, families and partners to become stewards for the environment.

### Strategies that will support action:

- Empower staff, young people and families in identifying and implementing environmentally sustainable initiatives.
- Leverage international environmental sustainability benchmarking and excellence programs to learn from and with other leaders in environmental sustainability.
- Foster strategic partnerships with other organisations to develop and champion energy sustainability programs and innovation.
- Generate patient and staff therapy and wellness programs using horticulture and environmentally sustainability themes.
- Cultivate a unique connection to land through development of a healing First Nations garden.

Drive culture  
change through  
empowered leaders



## Focus 02: Procurement

### Our commitment:

We will promote and establish an organisational preference for sustainable products and services to reduce our carbon footprint and deliver high quality outcomes.

### Strategies that will support action:

- Identify and establish purchasing arrangements with approved vendors to enhance environmentally sustainable products and systems.

Embed  
sustainable  
procurement and  
business practices



## Focus 03: Transportation

### Our commitment:

We will create strategies and initiatives that reduce carbon emissions associated with supply and service transportation.

### Strategies that will support action:

- Increase access to facilities and amenities that enable alternative transport options for staff.
- Optimise access, utilisation and benefits of fleet vehicles.
- Scale and embed virtual models of working and care.

Minimise our use of transport across supply, service and travel options



## Focus 04: Energy and water

### Our commitment:

We will establish internal infrastructure and education to reduce the amount of energy and water used across our health services and transition to renewable energy sources.

### Strategies that will support action:

- Trial innovative energy efficiency products and energy modelling.
- Implement an effective energy and efficient lighting strategy across Children's Health Queensland facilities.
- Optimise the use and benefits of the whole of Government electricity contract.
- Develop and implement an effective water efficiency and quality strategy.

Reduce our  
consumption of  
power, water and  
natural resources



## Focus 05: Waste

### Our commitment:

We will mobilise our community to adopt a waste avoidance culture and divert waste from landfill through innovative, ethical, economic, environmental and socially responsive mechanisms.

### Strategies that will support action:

- Establish effective waste management performance targets.
- Optimise recycling opportunities.
- Implement a waste management education and communication strategy.
- Drive effective waste diversion and socially responsible initiatives.

Improve waste and resource efficiency, waste diversion from landfill





## Focus 06: Resilience

### Our commitment:

We will foster strategies and education programs to promote public health and help reduce activities that harm the environment and contribute to climate change so we can deliver life-changing care both now and in the future.

### Strategies that will support action:

- Develop contemporary environmental sustainability education programs for staff, young people, families and partners.

Prepare and invest in our people for the future

# Governance, review and monitoring

The progress of the *Environmental Sustainability Plan 2021-2024* and identified initiatives, will be reviewed by the **Environmental Stewardship Network** twice yearly.

The network will provide updates to the Clinical Council and accountable Executive Sponsor (Executive Director Allied Health) as significant initiatives and milestones are achieved.

Key performance indicators including annual waste, energy and water data will be reviewed by the Environmental Stewardship Network on a quarterly basis and shared with the Clinical Council and Executive Sponsor.

The Plan will be comprehensively reviewed and updated annually or as required by the Environmental Sustainability Lead in conjunction with relevant key stakeholders.



# The best care for every Queensland child



[www.childrens.health.qld.gov.au](http://www.childrens.health.qld.gov.au)