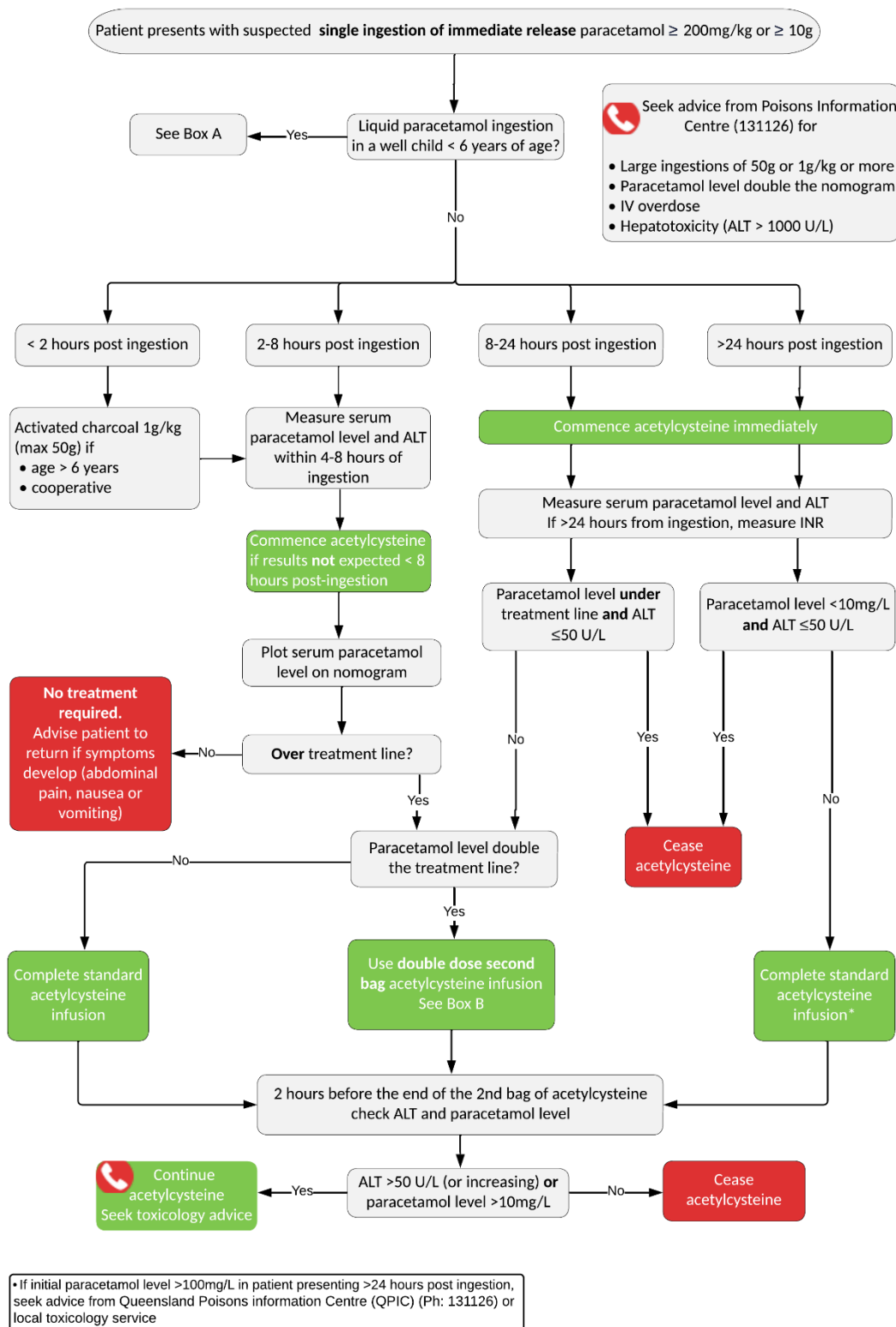


Queensland Paediatric Flowchart and Medications

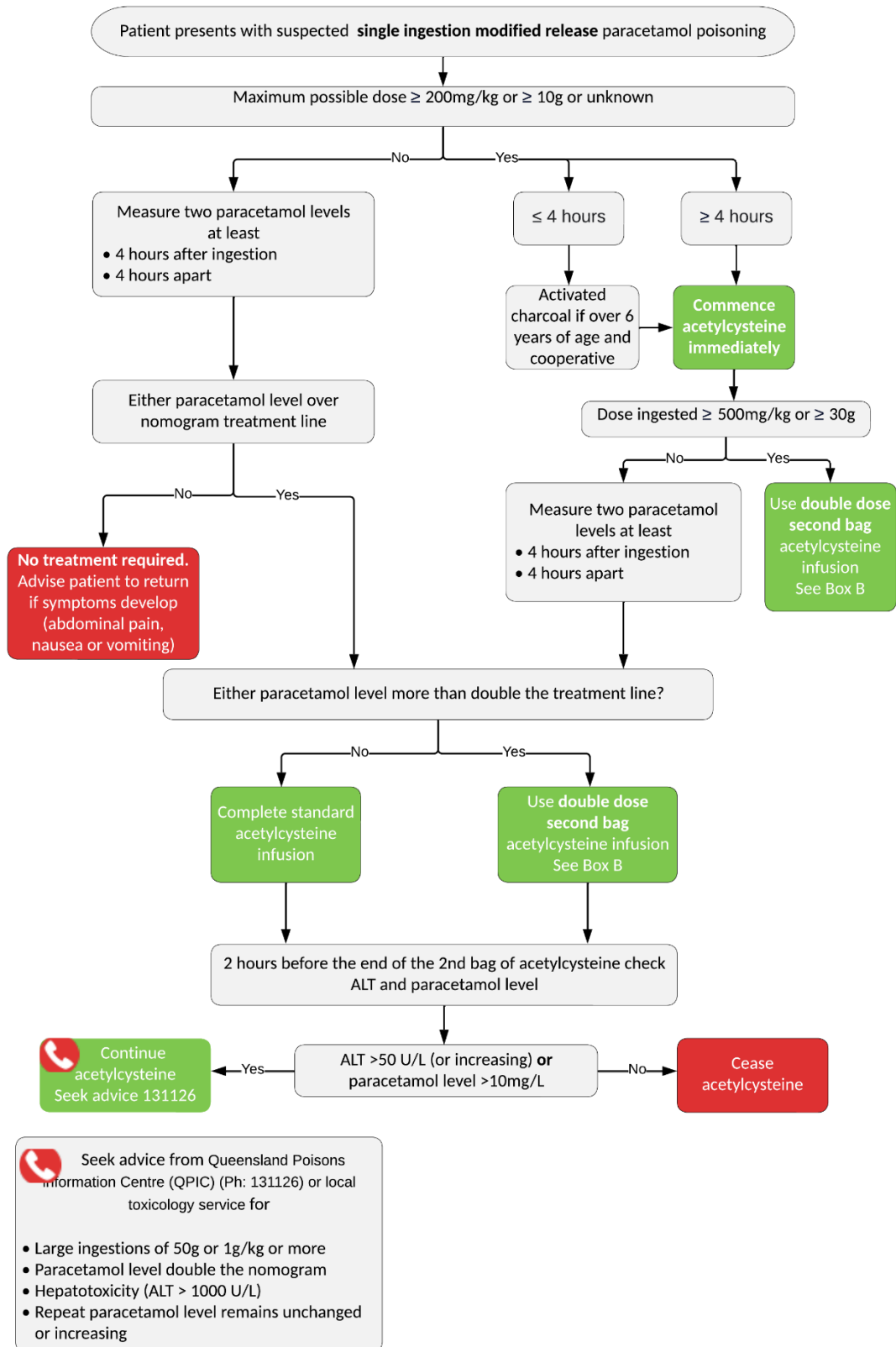
Emergency

Paracetamol ingestion - Emergency management in children – Flowchart



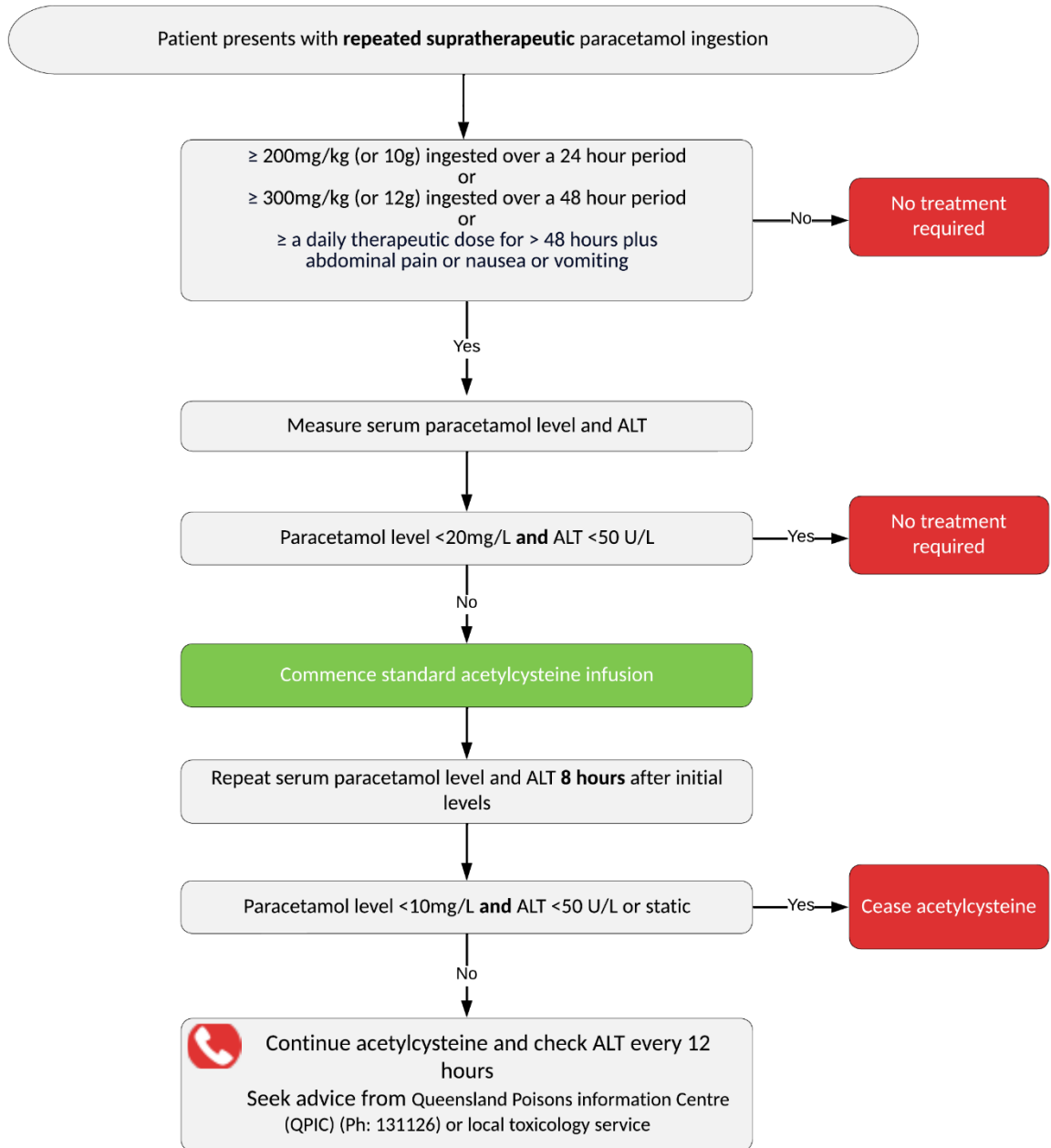
CHQ-GDL-60018-1 Paracetamol Ingestion – Emergency management in children – Flowchart V6.0





CHQ-GDL-60018-1 Paracetamol Ingestion – Emergency management in children - Flowchart





CHQ-GDL-60018-1 Paracetamol Ingestion – Emergency management in children - Flowchart



Box A: Acetylcysteine administration following liquid paracetamol ingestions in children aged <6 years

For well children aged less than 6 years presenting within 2 hours of ingestion of liquid paracetamol, measure a 2 hour paracetamol level.

Acetylcysteine will **not** be required for a serum paracetamol level less than **150 mg/L at 2 hours post-ingestion of liquid paracetamol.**

If greater than or equal to 150 mg/L, do not commence acetylcysteine but repeat paracetamol level at 4 hours and manage as per ingestion of immediate release paracetamol tablet.

Box B: Acetylcysteine administration following massive overdoses

The following patients **should have their second bag of acetylcysteine infusion doubled to 200 mg/kg over 16h:**

- **paracetamol level \geq double the nomogram line for immediate or modified release ingestions**
- **those who ingest \geq 30 g or \geq 500 mg/kg of modified release paracetamol**

Refer to the acetylcysteine [guideline](#) and use **the appropriate** order form (based on child's weight) or the electronic ordering system.

For more information refer to [CHQ-GDL-60018 Paracetamol Ingestion – Emergency management in children](#)

