

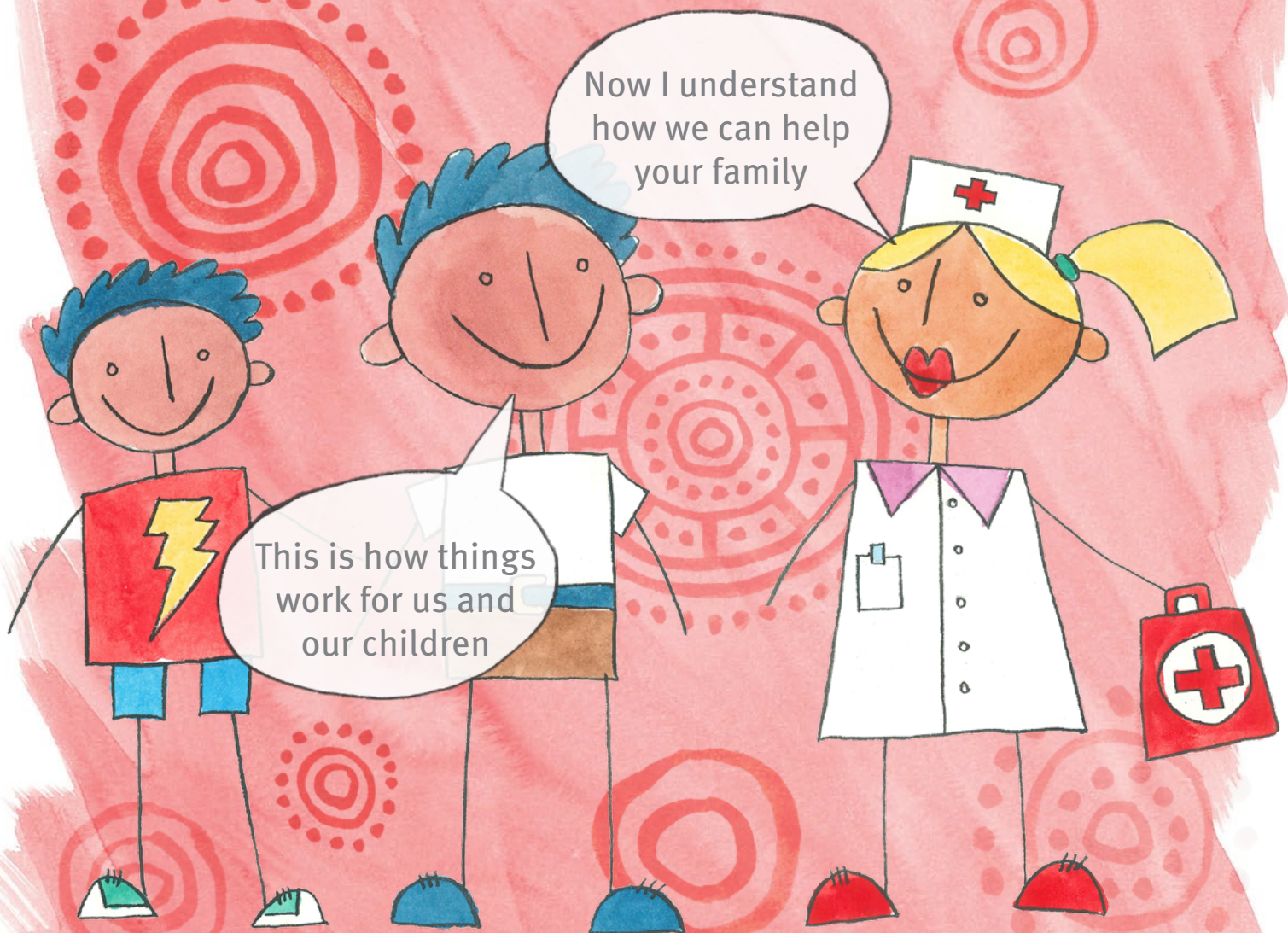
You make the decisions for your family and we can assist you with what you need



We place **children** and **families** at the **heart** of everything we do


Your family matters because:

- ◎ You know your child's life
- ◎ You know about your family's health
- ◎ All families are different



We place **children** and **families**
at the **heart** of everything we do

Families and clinicians are partners in a child's care



We want to
work together
with you

You are a part
of our health
care team

We place **children and families**
at the **heart** of everything we do

Let's use what makes your family strong



We place **children** and **families**
at the **heart** of everything we do